



Co-funded by the European Union

PARTNERS

PHOTOCONSORTIUM

CRDI
Ajuntament de Gimna

Cyprus University of Technology

unesco
Chair

BIBRACTE

MUSEO della CARTA
PESCIA

europeana

imec

egi

CYFRONET

www.eureka3d.eu
 @eureka_3d @eureka3d_@eureka3d_
 EUreka3D @EUreka_3D

Media Partner
DIGITAL CULTURE
 www.digitalmeetsculture.net



Cover image: The Lambousa Fishing Trawler. EU ERA and UNESCO Chairs on Digital Cultural Heritage - Cyprus University of Technology. With the support and cooperation of the Municipality of Limassol

EUREKA3D

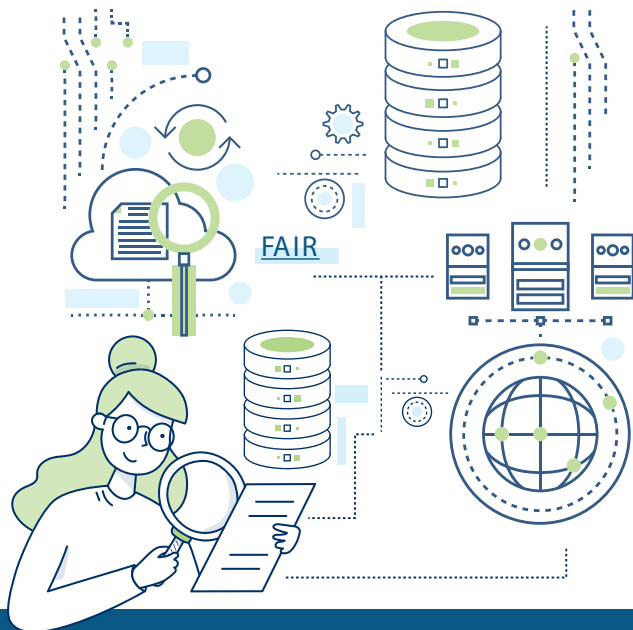
European Union's
 REKconstructed
 content in 3D



EUREKA3D

Eureka3D is the first and unique EU funded project that supports the whole value chain of the digital transformation of the cultural heritage sector. It offers capacity building, training, services and resources to Cultural Heritage Institutions, modernising their internal workflows and enabling cloud-based data, metadata and paradata management.

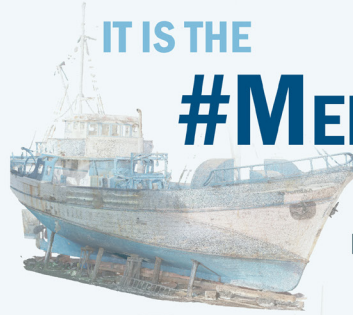
High quality dataset are beneficial to cultural institutions as they provide digital opportunities for promoting their collections and sharing knowledge, creating virtual visits, and offering valuable building blocks for history reconstructions, cultural tourism, education and learning.



IT IS **NOT** ONLY 3D...

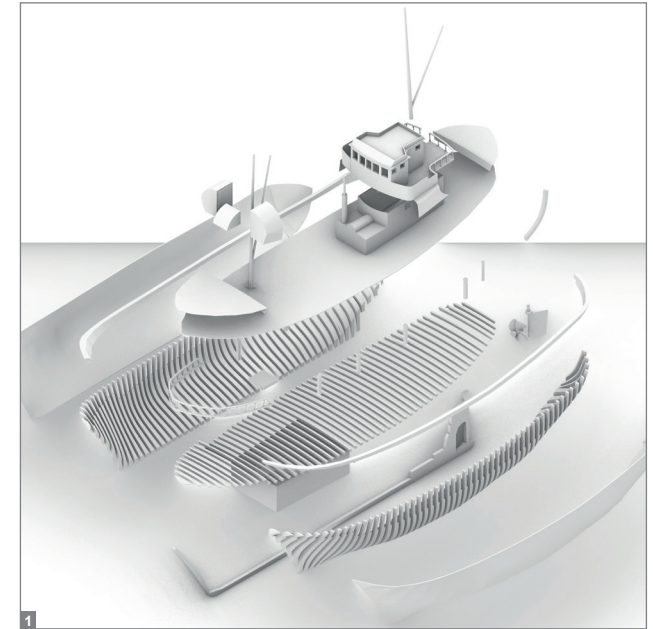
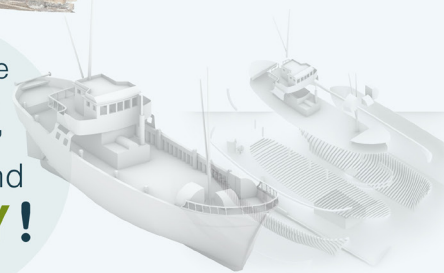
IT IS THE

#MEMORYTWIN



We capture the **HISTORY** behind the object, not only its geometric structure.

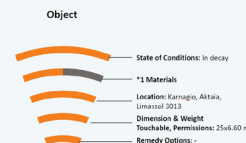
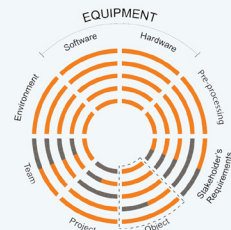
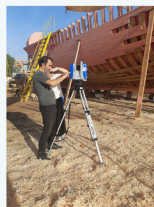
We preserve **MEMORY, VALUE and IDENTITY!**



IT IS **NOT** ONLY METADATA...

IT IS ALSO PARADATA

When digitising an object it is important to know **HOW** the data acquisition was carried out. The requirements, equipment used, the team, software and hardware, weather / environmental conditions... They all matter for understanding the **QUALITY** of the 3D model and its context.



1 | The Lambousa Fishing Trawler: Exploded axonometric of the 3D model. EU ERA and UNESCO Chairs on Digital Cultural Heritage - Cyprus University of Technology. With the support and cooperation of the Municipality of Limassol

2 | Cinematographic camera. Bell & Howell, 1940. Museu del Cinema – Col·lecció Tomàs Mallol Digitisation by CRDI - Ajuntament de Girona